

TECHNICAL GUIDE

Self-dehydrating breathers type eSDB



Content index

Application	4
Technical data	5
Electrical scheme and outputs	7
Dimensions.....	8
Order sheet.....	11

Application

Technology	Condition Based	Condition Based	Condition Based	Condition Based
eSDB type	eSDB XS	eSDB S	eSDB M	eSDB L
Application				
Tap-changers	●	-	-	-
Arc suppression coil (Petersen coil)	●	-	-	-
Air-filled cable boxes	●	-	-	-
Traction transformers	●	-	-	-
Network transformers ≤ 40 MVA	-	●	-	-
Network and generator step-up transformers > 40 MVA ≤ 200 MVA	-	-	●	-
Generator and network intertie transformers > 200 MVA	-	-	-	●
Phase shifting transformers ≤ 40 MVA	-	●	-	-
Phase shifting transformers > 40 MVA ≤ 200 MVA	-	-	●	-
Phase shifting transformers > 200 MVA	-	-	-	●
Shunt reactors ≤ 40 Mvar	-	●	-	-
Shunt reactors > 40 Mvar ≤ 200 Mvar	-	-	●	-
Shunt reactors > 200 Mvar	-	-	-	●
HVDC transformers	-	-	-	●
Furnace transformers	-	-	-	●
Cavern transformers	-	-	-	●
Quantity of oil	$\leq 40t$	$\leq 40t$	$> 40 \leq 80t$	$\leq 100t$

Technical data

Type	Power consumption ⁽¹⁾	Silica gel (main tank)	Weight
eSDB XS	320 W	1.5 kg / 3.3 lb	14 kg / 30.9 lb
eSDB S	320 W	1.5 kg / 3.3 lb	15 kg / 33.1 lb
eSDB M	640 W	2.5 kg / 5.5 lb	20 kg / 44.1 lb
eSDB L	640 W	3.0 kg / 6.6 lb	22.5 kg / 49.6 lb

Comem eSDB	Technical data		
Material	All the external part are resistant to transformer oils, salt fog and UV rays – Aluminum and stainless steel ⁽¹⁾		
Four types of installation environment	Indoor/Outdoor/Tropical proof Offshore	Corrosion class: C5-Medium Corrosion class: C5-High / CX	Grey RAL 7035 (on request)
Standard	IEC 60076-22-7		
Ambient temperature	From -40 °C to 80 °C (from -40 °F to 176 °F)		
Degree of protection	IP65 according to EN 60529		
Degree of protection of terminal box	IP66 according to EN 60529		
Ventilation valve	To prevent the formation of condensation		
Desiccant	Colorless, non-poisonous silicagel; amount according application table above		
Cable glands	3 x M25x1.5		
Functional test	Standard		
Overvoltage protection	Standard (replaceable varistor and fuse)		
Heating element protection	Standard (replaceable fuse)		
Redundancy	Double feedback signal - Humidity sensor and load cell (for M & L types)		
Display	User-friendly – Quick access menu		
Flange type	DIN or EN flange		

(1) For critical environmental conditions, please contact us: customerservice@it.comem.com

Technical data

Power supply⁽¹⁾

Rated Voltage	From 115 to 230 V ac/dc $\pm 10\%$ 50/60 Hz
Current consumption	Max 100 mA (during normal operation) Maximum current during regeneration < 3 A (during regeneration)
Heating element insulation	2.0 kV 50/60 Hz, 1 min
External protection	Automatic circuit breaker 16 A – 20 A, characteristic: C – K – Z

Signal contacts⁽¹⁾

Braking capacity (relays on the electronic card)	Voltage	Current	Braking capacity	
	230V AC	2A	500 VA	$\cos\Phi > 0,5$
	30/110/220V DC	0,83/0,23/0,11 A	500 VA	L/R < 40 ms
Dielectric strength of contacts	Between contacts and ground: 2kV (60 sec)			
	Between contacts in open position: 1kV (60 sec)			
Configuration	Standard 1 x change over contact: POWER FAILURE (terminals 22-24-21 – Relay 2) 1 x change over contact: SYSTEM FAILURE (terminals 12-14-11 – Relay 1)		Special 1 x normally closed contact: POWER FAILURE (terminals 22-21 – Relay 2) 1 x change over contact: HEATER ON (terminals 12-14-11 – Relay 1)	

Outputs⁽¹⁾

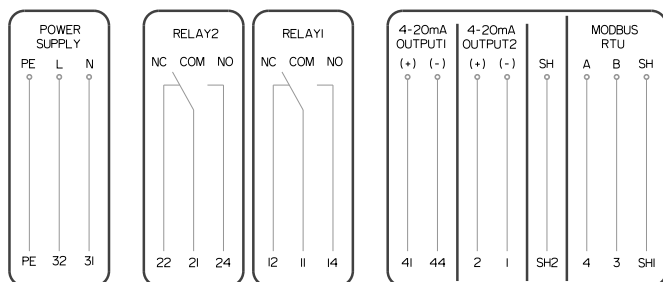
Analog outputs	2 x 4 – 20 mA (Max 30 m / 98 ft)
Digital outputs	Modbus RTU – Serial port RS485 (Max 30 m / 98 ft) Modbus TCP/IP – Ethernet port Data logger – USB port

Recommended wires⁽¹⁾

Power supply	14 AWG
Relay	18 AWG
4-20 mA	2 x 18 AWG (shielded twisted cable)
Modbus RTU	2 x 18 AWG (shielded twisted cable)
Modbus TCP/IP	Category 5e straight cable

(1) For more information contact us: customerservice@it.comem.com

Electrical scheme and Status indicators

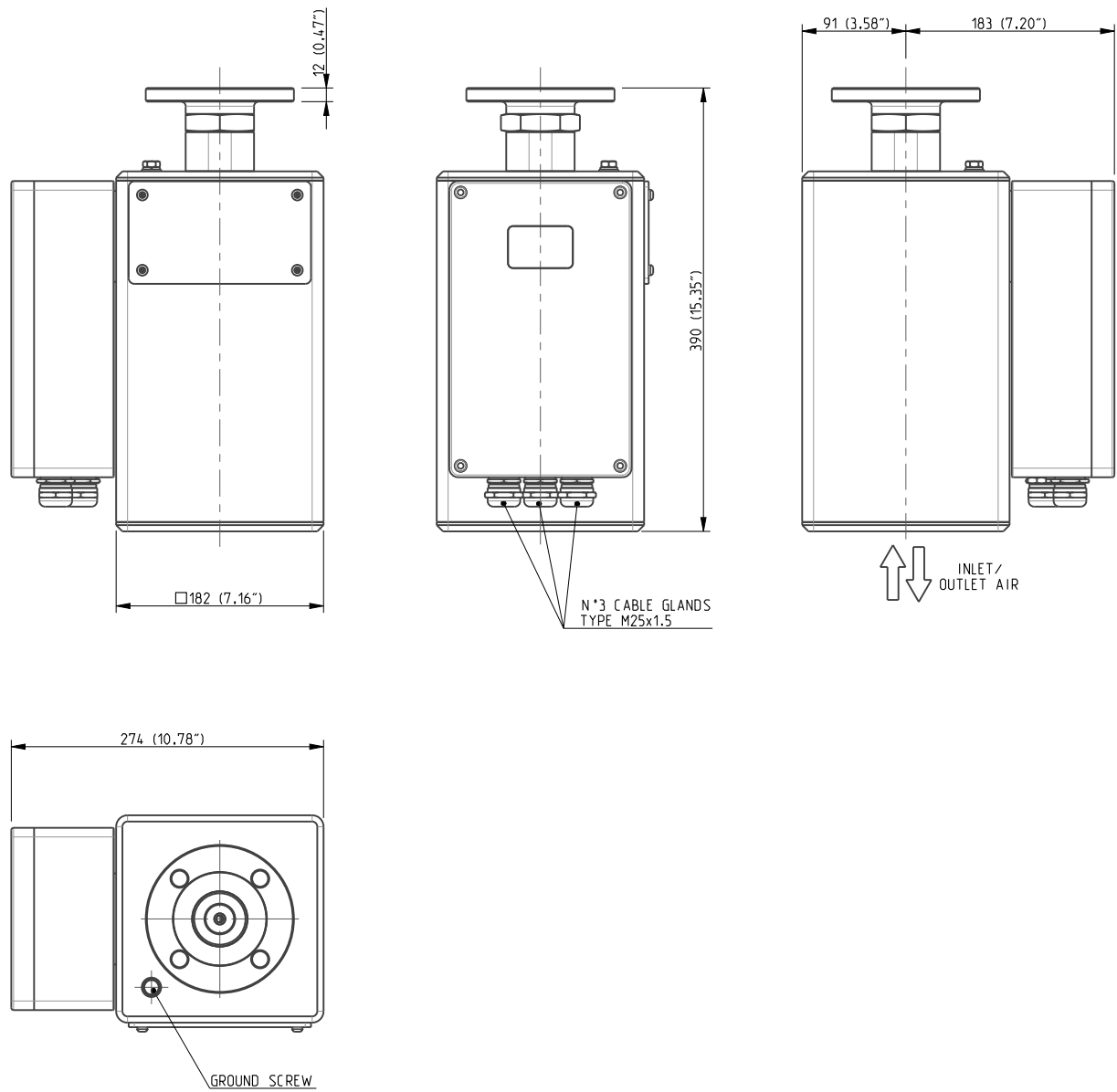


	Idle - Green
	Warning - Yellow (Fixed tank 1, Blinking tank 2)
	Drying - Yellow (Fixed tank 1, Blinking tank 2)
	Cooling - Yellow (Fixed tank 1, Blinking tank 2)
	USB active - Blue
	Electronic board failure - Red
	Heater failure - Red
	Solenoid valve Failure - Red
	Drying failure - Red
	Sensors Reading - White

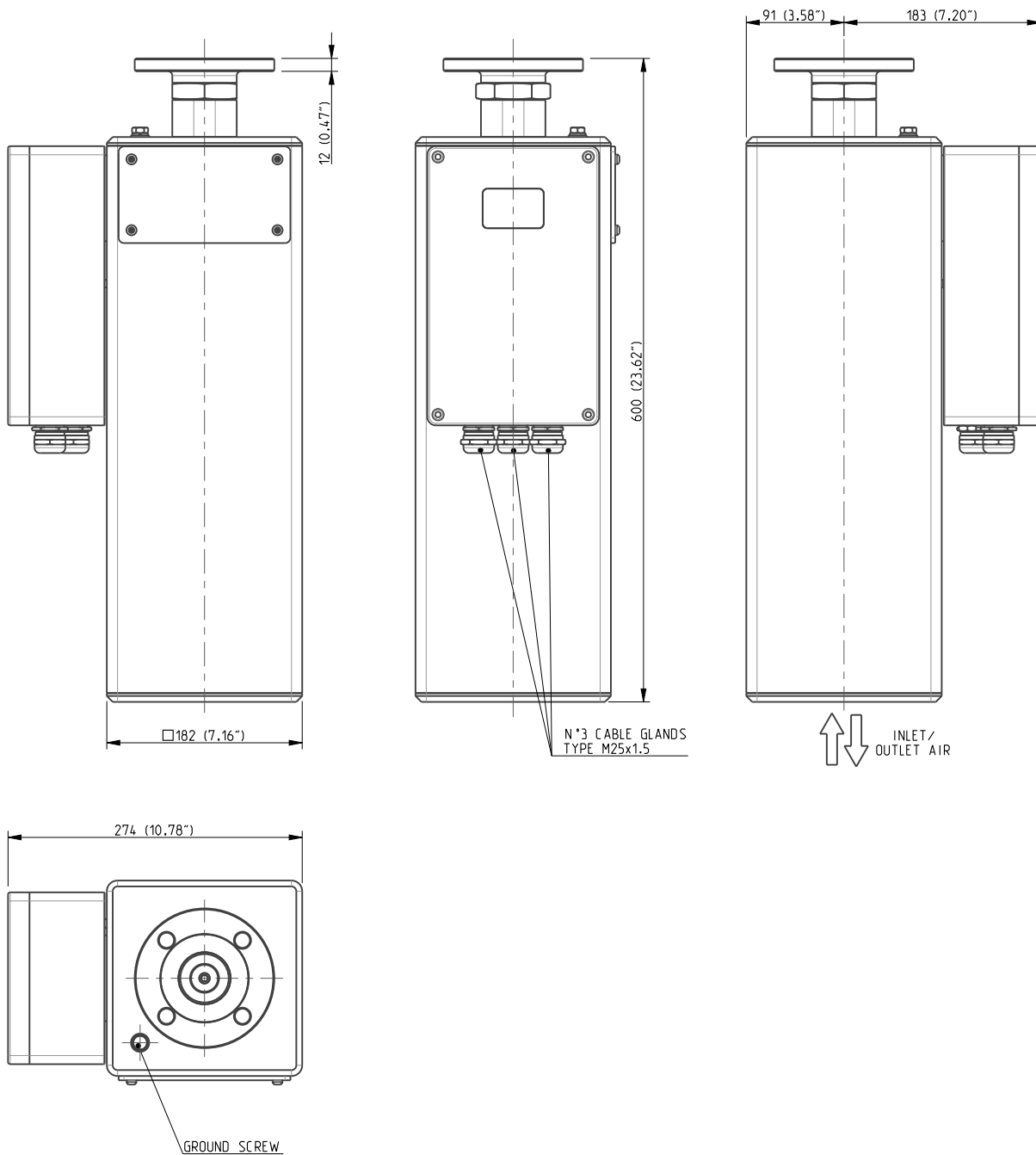
For more information contact us:
customerservice@it.comem.com

Dimensions

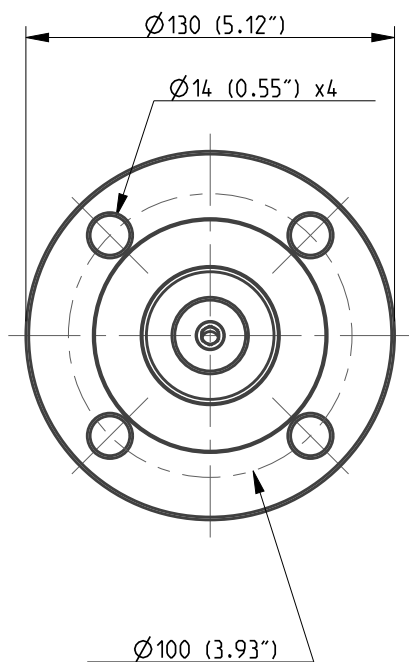
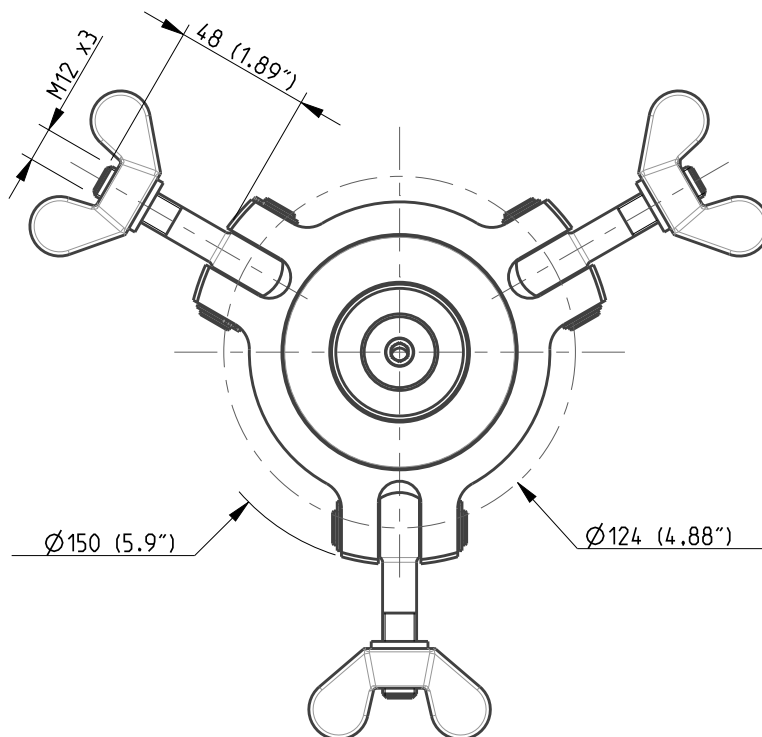
eSDB XS/S



eSDB M/L



Dimensions

DN40 flange - EN 1092-1**DIN flange - DIN 42 562**

For further information or clarification, please contact our support team:
E-mail address: customerservice@it.comem.com

Order sheet

Date	
Rev.	
Customer reference	

Type

<input type="checkbox"/>	eSDB XS
<input type="checkbox"/>	eSDB S
<input type="checkbox"/>	eSDB M
<input type="checkbox"/>	eSDB L

Flange

<input type="checkbox"/>	EN flange
<input type="checkbox"/>	DIN flange

Corrosion protection class

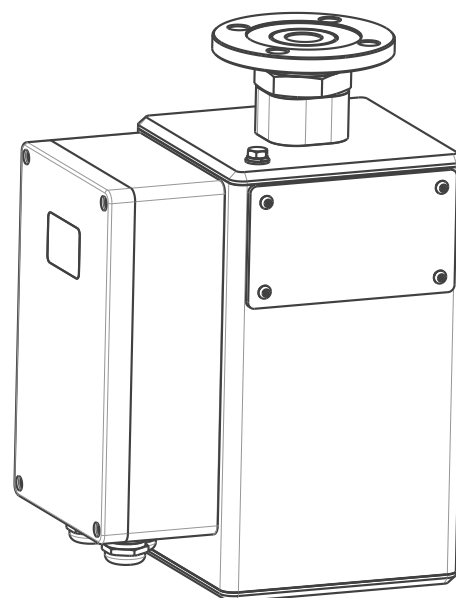
<input type="checkbox"/>	C5-Medium (not paintable)
<input type="checkbox"/>	C5-High / CX (RAL 7035 – only terminal box)

Communication

<input type="checkbox"/>	Standard (2xRelay)
<input type="checkbox"/>	Special (2xRelay, 2x4-20 mA, Modbus RTU, Modbus TCP/IP, Data logger)

Electrical scheme

<input type="checkbox"/>	Standard (Power failure – System failure)
<input type="checkbox"/>	Special (Power failure – Heater on)



Notes: For different configuration / options, please contact us: customerservice@it.comem.com

COMEM SpA

Localita' Signolo 22, Sr11
36054 Montebello Vicentino
Vicenza - Italy
Tel +39 0444 449 311

www.comem.com

The data and illustrations are not binding. We reserve the right to modify the contents of this document without prior notice following the technical and product developments.

Copyright 2021 COMEM. All rights reserved

Technical guide-12-2021